

# Reciprocal Limbic-Cortical Function and Negative Mood: Converging PET Findings in Depression and Normal Sadness

Helen S. Mayberg, M.D., Mario Liotti, M.D., Ph.D., Stephen K. Brannan, M.D., Scott McGinnis, B.S., Roderick K. Mahurin, Ph.D., Paul A. Jerabek, Ph.D., J. Arturo Silva, M.D., Janet L. Tekell, M.D., Charles C. Martin, Ph.D., Jack L. Lancaster, Ph.D., and Peter T. Fox, M.D.

---

**Objective:** Theories of human behavior from Plato to Freud have repeatedly emphasized links between emotion and reason, a relationship now commonly attributed to pathways connecting phylogenetically “old” and “new” brain regions. Expanding on this theory, this study examined functional interactions between specific limbic and neocortical regions accompanying normal and disease-associated shifts in negative mood state. **Method:** Regions of concordant functional change accompanying provocation of transient sadness in healthy volunteers and resolution of chronic dysphoric symptoms in depressed patients were examined with two positron emission tomography techniques: [<sup>15</sup>O]water and [<sup>18</sup>F]fluorodeoxyglucose, respectively. **Results:** With sadness, increases in limbic-paralimbic blood flow (subgenual cingulate, anterior insula) and decreases in neocortical regions (right dorsolateral prefrontal, inferior parietal) were identified. With recovery from depression, the reverse pattern, involving the same regions, was seen—limbic metabolic decreases and neocortical increases. A significant inverse correlation between subgenual cingulate and right dorsolateral prefrontal activity was also demonstrated in both conditions. **Conclusions:** Reciprocal changes involving subgenual cingulate and right prefrontal cortex occur with both transient and chronic changes in negative mood. The presence and maintenance of functional reciprocity between these regions with shifts in mood in either direction suggests that these regional interactions are obligatory and probably mediate the well-recognized relationships between mood and attention seen in both normal and pathological conditions. The bidirectional nature of this limbic-cortical reciprocity provides additional evidence of potential mechanisms mediating cognitive (“top-down”), pharmacological (mixed), and surgical (“bottom-up”) treatments of mood disorders such as depression. (Am J Psychiatry 1999; 156:675–682)

---

The development of functional connections between limbic structures and neocortex has long been considered critical to the evolution of complex emo-

tional behaviors, although conclusive experimental evidence from studies of humans is relatively sparse (1–6). Clinical observation and personal experience none-

---

Presented in part at the Third International Conference on Functional Mapping of the Human Brain, Copenhagen, May 19–23, 1997. Received May 5, 1998; revision received Sept. 25, 1998; accepted Oct. 10, 1998. From the Research Imaging Center and the Departments of Psychiatry, Neurology, and Radiology, University of Texas Health Science Center at San Antonio. Address reprint requests to Dr. Mayberg, Rotman Research Institute, Baycrest Centre, 3560 Bathurst St., Toronto, Ont. M6A 2E1, Canada; hmayberg@rotman-baycrest.on.ca (e-mail).

Supported by NIMH grant MH-49553, the National Alliance for Research on Schizophrenia and Depression, the Charles A. Dana Foundation, and Eli Lilly and Co.

The authors thank Stanley Mayberg, M.D., Lawrence Parsons, Ph.D., James Redmond, M.D., and Marty Woldorff, Ph.D., for comments and criticisms.

theless confirm the inseparable and often intrusive effects of transient changes in mood state on attention span, decisiveness, and other cognitive abilities, be it the fleeting sadness one feels on hearing a tragic news event or the more sustained feelings of melancholia and impaired concentration that accompany intense grief. The chronic and more insidious disruption of attentional processing observed in depressive illness (7, 8)—an extreme instance of a sustained altered mood state—further suggests common neural pathways mediating both the normal and pathological interactions of these behaviors.

Comparative anatomical studies provide material support for these hypotheses. Reciprocal pathways linking midline limbic structures (cingulate, hypothalamus, hippocampus, amygdala) with widely distributed brainstem, striatal, paralimbic, and neocortical sites are now well-defined (9, 10), and clear associations with specific motivational, affective, and emotional behaviors in animals have been demonstrated (3, 4, 11). By extrapolation, these regions are also assumed to be the neural substrates responsible for the systematic integration of exteroceptive and interoceptive inputs required for the combined sensory, cognitive, and autonomic processing at the core of normal and abnormal human emotional experience.

Previous human experiments have generally approached the brain localization of mood and attention in isolation and have rarely addressed mechanisms underlying their interaction (12, 13). With the use of complementary lesion-deficit and physiological studies (14–18), components of attention have been localized to right prefrontal, parietal, and dorsal anterior cingulate regions in both humans and primates. Mood has been mapped to predominantly limbic and paralimbic areas (cingulate, insula) and prefrontal cortex, but with considerable variability (19–24). Focal limbic (anterior cingulate), paralimbic (ventral frontal, anterior insula), and neocortical (prefrontal, parietal) abnormalities have also been identified in depression (25–29). However, correlations of these regional changes with specific symptoms or relationships between regions have not been fully explored (30).

To clarify mechanisms mediating these known mood-attention relationships, this study targeted inter-regional interactions and regional reciprocity in functional brain activity present during both transient and sustained changes in affective state. Using positron emission tomography (PET), we investigated two experimental manipulations of mood: transient sadness provoked in healthy volunteers and treatment-induced resolution of sustained dysphoria in clinically depressed patients. On the basis of the location and direction of changes in neural activity seen in these studies, we propose that the well-recognized concurrence of negative mood and impaired attentional processing in both normal and pathological conditions is mediated by reciprocal interactions between specific limbic and neocortical sites.

## METHOD

For experiment 1, healthy subjects were recruited by advertisement and word of mouth. Potential participants were asked to prepare scripts describing two recent sad personal experiences, and these were reviewed with the investigators during the screening interviews. The potential subjects were screened for the presence of medical, neurological, and psychiatric conditions, personal or family history of major affective disorder, and medication use, any of which precluded participation in the study. Semistructured interviews confirmed the absence of major or minor depressive symptoms and evidence of other previously unrecognized psychiatric syndromes or complaints. Potential subjects were then tested on their emotional reactions to their prepared scripts. Of 13 potential subjects so screened, eight right-handed euthymic women (mean age=36 years, SD=6; mean Beck Depression Inventory score=1.75, SD=1 [asymptomatic range=0–9]) were selected for participation on the basis of their ability to predictably provoke an intense sad mood state under laboratory conditions.

For experiment 2, patients who had responded in a 6-week inpatient, placebo-controlled, double-blind PET study of fluoxetine treatment in depression (20 mg/day fixed dose) were identified. All patients met the DSM-IV criteria for a major depressive episode, unipolar type, as diagnosed by two independent psychiatrists (J.A.S. and J.L.T.) and confirmed by means of a structured psychiatric interview (Structured Clinical Interview for DSM-IV [31]). Patients with cerebrovascular risk factors or a previous stroke, documented head trauma, neurodegenerative disorders, other axis I psychiatric diagnoses, or evidence of global cognitive impairment were excluded, as were patients with psychotic symptoms, alcohol or substance abuse, or previous ECT. Responders were defined as patients who had a minimum 50% decrease in Hamilton Depression Rating Scale score, independent of treatment group (i.e., fluoxetine or placebo). Eight of 15 participating male patients met these criteria (mean age=44 years, SD=8; initial 17-item Hamilton depression scale score=22, SD=3; 6-week score=11, SD=2.5). Four responders received fluoxetine, and four received placebo. Written informed consent was obtained from all subjects, and the experiment was conducted as approved by the University of Texas Health Science Center's institutional review board.

### Experiment 1

Regional cerebral blood flow (rCBF) was measured with the use of [<sup>15</sup>O]water and PET in two mood states: sad and neutral (euthymic). For each subject there were two trials in the sad condition and four neutral trials (three during rest with eyes closed and one with a neutral-emotion script) in a randomized design. Rehearsed autobiographical scripts were used to provoke the sad (or neutral) mood state. On the basis of prescan practice trials with each subject, the protocol allowed 8–10 minutes to achieve the maximum target mood. Mood state was then maintained, without active rumination on the script, for approximately 2 minutes before tracer injection. Scans were acquired during this state with the subject's eyes closed. While monitoring of one's internal mood state (whether sad or neutral) was required for all conditions, the intent of the protocol was to minimize participation of brain regions mediating the cognitive processes involved in generating the emotional state. Subjects were debriefed after completion of each 90-second scan, and mood was allowed to return to a baseline euthymic state before initiation of the next condition, generally after about 5 minutes. Mood state was rated every 2 minutes throughout the session with a visual analog scale and the subject's self-report. Rest or neutral mood conditions required a score of 6 of a maximum 7 on the calmness scale and a mandatory 0 of 7 on the sadness scale to initiate scan acquisition; sad mood conditions required a minimum score of 6 of 7 on the sadness scale.

### Experiment 2

Changes in regional glucose metabolism associated with remission of both dysphoric mood and other syndromal features were measured by means of [<sup>18</sup>F]fluorodeoxyglucose (FDG) and PET in the selected subset of unipolar depressed patients. Scans were performed before and after 6 weeks of treatment as described above.

**TABLE 1. Location of Concordant and Reciprocal Regional Changes With Transient Sadness in Eight Healthy Volunteers and With Recovery From Depression in Eight Patients**

Zone and Region	Brodmann Area	Side	Healthy Volunteers <sup>a</sup>						Depressed Patients <sup>b</sup>					
			Coordinate <sup>c</sup>			z Score <sup>d</sup>	Extent (mm <sup>3</sup> )	% Change	Coordinate <sup>c</sup>			z Score <sup>d</sup>	Extent (mm <sup>3</sup> )	% Change
			x	y	z				x	y	z			
<b>Ventral</b>														
Subgenual cingulate	25	Bilateral	0	22	-2	3.7	1,096	13	-2	6	-6	-3.0	296	-17
Ventral-anterior insula		Right	32	24	-2	2.7	336	5	30	18	-8	-2.3	16	-8
		Left	-28	32	-4	2.6	392	9	-16	18	-16	-2.6	150	-11
Mid-anterior insula		Right	34	10	10	2.5	1,008	7	30	-2	8	-2.3	16	-9
		Left	-30	2	10	4.3	2,400	11	-26	-4	8	-2.2	16	-10
Posterior insula		Right	32	-22	20	3.2	608	9	38	-18	20	-3.8	616	-18
		Left	-36	-16	18	3.0	800	9	-34	-14	20	-2.6	40	-15
<b>Dorsal</b>														
Lateral prefrontal	46	Right	42	12	20	-2.9	936	-5	42	14	20	3.3	488	12
Inferior parietal	9	Right	30	12	38	-3.6	1,160	-7	28	12	38	3.1	224	15
		Left	44	-50	32	-3.0	1,520	-5	42	-34	34	3.3	536	16
Posterior cingulate	40	Right	-46	-38	34	-3.2	400	-8	-40	-46	34	2.2	16	10
			0	-28	23	-2.8	536	-7	4	-28	22	4.4	840	20
Anterior cingulate	31	Left	-12	-38	32	-3.0	480	-8	14	-42	28	2.6	80	15
			24/32	Left	-14	38	22	-2.6	48	-4	-10	24	24	2.1

<sup>a</sup> Change in regional blood flow measured with [<sup>15</sup>O]water (value during sadness condition minus value during rest).

<sup>b</sup> Change in regional glucose metabolism measured with FDG (value after 6 weeks of treatment minus baseline value).

<sup>c</sup> Millimeters relative to anterior commissure (35): x=right (+)/left (-); y=anterior (+)/posterior (-); z=superior (+)/inferior (-).

<sup>d</sup> For z values >1.96, p<0.05; for z values ≥2.6, p<0.01; for z values ≥3.3, p<0.001.

Scans were acquired with the patients in the resting state, with eyes closed and ears uncovered. The patients were specifically instructed to relax, stay awake, and avoid rumination on any one topic. They were not explicitly instructed to monitor internal mood state. This approach aimed to examine regional effects associated with a sustained shift in overall mood state accompanying remission of illness without any overt acute manipulation of either affective or cognitive state.

#### General PET Method

All PET scans were acquired on a General Electric Scanditronix 4096 camera (15 parallel slices; 6.5-mm center-to-center interslice distance) with measured attenuation correction (68Ge/68Ga transmission scans) and were reconstructed to a final in-plane resolution of 7.0 mm full width at half maximum. In experiment 1, CBF was measured with a conventional bolus [<sup>15</sup>O]water technique (60–65 mCi [<sup>15</sup>O]water dose per scan; scan duration=90 seconds) (32). Glucose metabolism was measured in the resting state with FDG (5 mCi FDG dose; scan duration=20 minutes) following a standard 40-minute FDG uptake period (33). An anatomical magnetic resonance imaging (MRI) scan of each subject was also acquired for the purposes of spatial transformation of the PET data and parametric image display (Elscent Gyrex 2T-DLX, Haifa, Israel) (three-dimensional gradient/recall acquisition in the steady state sequence: TR=33 msec; TE=12 msec; flip angle=60°; 256×256×127 volume; spatial resolution of 1 mm<sup>3</sup>).

#### PET Data Analysis

All analyses were performed with in-house software and validated methods. Following spatial transformation of PET and MR images into proportional bicommissural coordinate space (34) relative to the 1988 stereotaxic atlas of Talairach and Tournoux (35), voxel-wise tissue activity of either [<sup>15</sup>O]water or FDG was first value-normalized to mean whole brain activity and then scaled to an arbitrary mean of 1000 (32). Value- and spatially normalized images were then trilinearly interpolated, resampled (60 slices; 8-mm<sup>3</sup> voxels), and Gaussian-filtered to a final resolution of 9.9 mm (full width at half maximum) before statistical analysis.

State-related changes in rCBF (experiment 1) and metabolism (experiment 2) were detected in the following manner. A pixel-by-pixel subtraction of the condition pairs was first performed for each trial

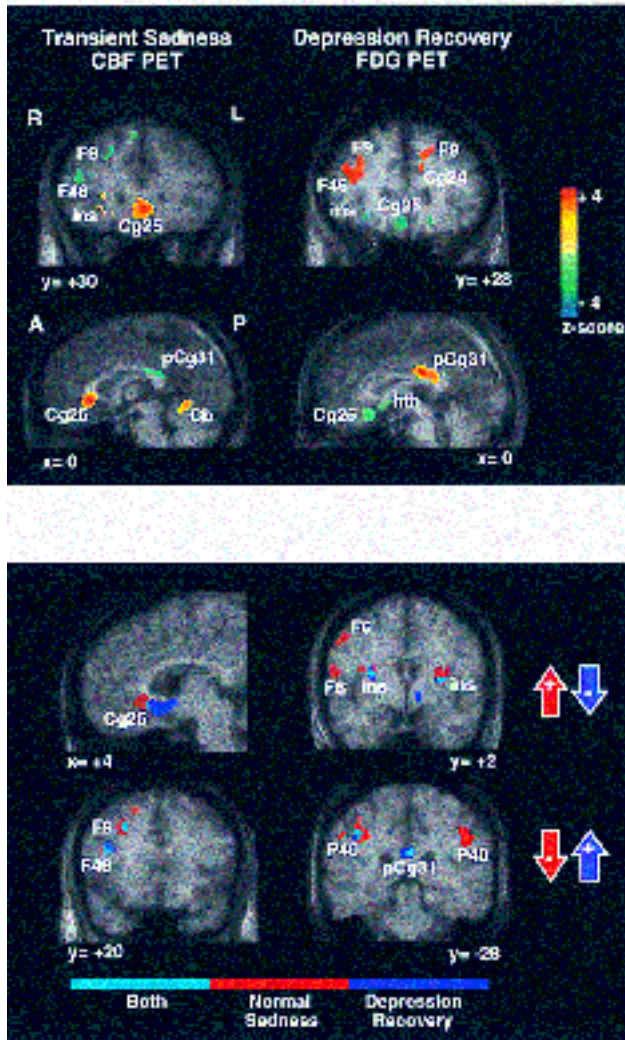
in each individual. Within-subject differences were then averaged across subjects, creating a grand-mean difference image for each experiment (value for sad memory minus value for rest in healthy subjects; value with treatment minus baseline value in depressed patients). A beta-2 statistic measuring kurtosis of the histogram of the difference image (change distribution curve) was used as an omnibus test to assess overall significance (36). The beta-2 test was implemented in the MIPS software (Research Imaging Center, San Antonio) in a manner similar to the use of the gamma-2 statistic (37). The beta-2 improves on the gamma-2 by using a better estimate of the degrees of freedom (i.e., "number of resyls" in the PET images) (38). The omnibus test was followed by a maxima and minima search to identify local extrema within a search volume measuring 125 mm<sup>3</sup> (39). To facilitate reporting and visualization of these maxima and minima, group mean subtraction images were converted post hoc to statistical parametric images of z scores based on the variance of all local changes within the subtraction images. Locations of concordant focal maxima and minima exceeding a z score magnitude of 1.96 (p≤0.05, two-tailed) are listed in table 1, with the peak voxel of each area described in x, y, and z coordinates in millimeters relative to the anterior commissure. Concordance was defined as a common Brodmann area identifier for the coordinates of the maxima or minima locations in both experiment 1 and experiment 2 (40), as well as evidence of anatomical overlap in the extent of significant activations or deactivations seen with the use of a logical contrast of the two z score maps (figure 1, bottom) (41).

## RESULTS

### Experiment 1

Intense sadness was experienced by all subjects (sadness score=6.85, SD=0.55; resting score=0, SD=0). On average, a sad state (minimum sadness score of 4 or 5 of the maximum 7) was achieved within 5–7 minutes of initiation of the trial. The approximate duration of sustained sadness (score of 6 or 7) was 5 minutes. During the debriefing interview, the subjects confirmed that

**FIGURE 1. Reciprocal Changes in Cortical and Paralimbic Function With Shifts in Negative Mood State<sup>a</sup>**



<sup>a</sup> Top: Left images: changes in regional cerebral blood flow (CBF) (with [<sup>15</sup>O]water PET) associated with transient sadness in eight healthy volunteers. Right images: changes in regional glucose metabolism (with FDG PET) after 6 weeks of treatment in eight unipolar depressed patients. Coronal (top row) and sagittal (bottom row) views. Sadness is associated with increases in ventral paralimbic regions and decreases in dorsal frontal regions. With recovery from depression, the reverse is seen: ventral decreases and dorsal cortical increases. Slice locations are in millimeters relative to the anterior commissure. Numbers are Brodmann area designations. R=right; L=left; A=anterior; P=posterior; F=prefrontal; ins=anterior insula; Cg24=dorsal anterior cingulate; Cg25=subgenual cingulate; pCg=posterior cingulate; Cb=cerebellum; hth=hypothalamus. Color scale: red indicates increases and green indicates decreases in flow or metabolism. Bottom: Logical images showing anatomical overlap of significant changes common to both experiments. Top row: concordant areas with increased flow during sadness and decreased metabolism during remission. Bottom row: areas with decreased flow during sadness and increased metabolism during remission. Numbers are Brodmann area designations. F=prefrontal; p=parietal. Red indicates changes unique to sadness; dark blue indicates changes unique to remission of depression; lighter blue indicates changes common to both. Arrows signify direction of change associated with each condition.

the debriefing interview, the subjects confirmed that they had been able to comply with the instructions, and six of the eight described being tearful. All subjects also described being less aware of the scanning environment while intensely sad. Resting state debriefing identified no consistent repetitive thoughts in any subject.

Sadness compared with rest was associated with both increases and decreases in rCBF (omnibus: beta-2=3.216, df=1972, p=0.001, two-tailed) (figure 1, left). Increases were seen in ventral limbic and paralimbic sites (subgenual cingulate [Brodmann area 25] and ventral, mid-, and posterior insula); decreases were predominantly in dorsal cortical regions (right dorsal prefrontal [Brodmann area 46/9], inferior parietal [Brodmann area 40], dorsal anterior cingulate [Brodmann area 23/31]) (table 1). Areas of significant change not seen in experiment 2 included decreases in the right temporal cortex (Brodmann area 37) and bilateral inferior frontal cortex (Brodmann area 10/47), as well as increases in the cerebellar vermis and right premotor cortex (Brodmann area 6).

#### Experiment 2

Posttreatment metabolism relative to pretreatment metabolism was associated with both increases and decreases in specific limbic-paralimbic and neocortical sites, but in a pattern inverse to that seen with provoked sadness (beta-2=3.178, df=1972, p=0.001, two-tailed) (figure 1, right). These regionally similar effects were obtained despite differences in gender, time course of mood-state change (sustained versus transient), and type of PET radiotracer used in the two experiments (FDG versus [<sup>15</sup>O]water); they were seen with both active fluoxetine and placebo treatment, although the magnitude of changes in limbic regions was more robust with the active drug (data not shown).

Remission of depression was characterized by metabolic increases in dorsal cortical regions (right dorsolateral prefrontal [Brodmann area 46/9], inferior parietal [Brodmann area 40], dorsal anterior cingulate [Brodmann area 24b], and posterior cingulate [Brodmann area 23/31]) and concomitant decreases in ventral limbic and paralimbic sites (subgenual cingulate [Brodmann area 25] and ventral, mid-, and posterior insula) (table 1). The anatomical overlap of findings in the two experiments is presented in figure 1, bottom. Additional changes seen uniquely with recovery from depression included increases in the pons and left prefrontal cortex as well as decreases in the hippocampus and hypothalamus.

#### DISCUSSION

This study, using two separate subject populations and two different functional imaging approaches, independently demonstrated reciprocal changes involving nearly identical limbic-paralimbic and neocortical

regions with both acute and chronic changes in negative mood state.

In the first and more direct assessment of brain regions mediating negative mood, the induction of transient normal sadness revealed most significantly increases in subgenual cingulate (Brodmann area 25) and decreases in right prefrontal cortex (Brodmann area 9). The increases in subgenual cingulate closely replicate previously reported findings in transient sadness with the use of a variety of provocation methods (12, 20). In contrast, the observed right prefrontal decreases (as well as the less significant decreases in inferior parietal and dorsal anterior cingulate) are the exact inverse of those seen in published studies where scanning occurred during overt processing of the sad stimuli (19, 20, 24). Such decreases are nonetheless comparable to those repeatedly described in resting-state studies of patients with clinical depression (26, 42). Furthermore, these decreases localize to areas previously implicated in both imaging and behavioral studies of attention (14, 18). In other words, the experience of sadness, as studied here, resulted not only in limbic activation but also in the simultaneous deactivation of cortical regions known to mediate attentional processing, independent of mood state. This observed reciprocal relationship between limbic increases and cortical decreases also appears consistent with changes in environmental awareness described by the subjects in the debriefing interview, as well as the large body of experimental evidence associating negative mood with impaired attention (8). While performance on attentional tasks was not explicitly monitored during or following the scanning period, performance deficits have been demonstrated in a separate event-related-potential study in which the identical sadness provocation method was used in a different group of subjects (43).

These reciprocal limbic-cortical and mood-attention relationships were confirmed, although more indirectly, in the second experiment, where resolution of chronic negative mood symptoms accompanying recovery from a chronic depressive episode was examined. The observed right dorsolateral prefrontal increases (also, increases in left prefrontal and dorsal anterior cingulate) are the normalization of a pretreatment frontal hypometabolic pattern characteristic of unipolar depression (relative regional glucose metabolism expressed as value-normalized tissue counts: pretreatment=1185, SD=108; posttreatment=1285, SD=25; healthy subjects=1236, SD=151). These pretreatment abnormalities have been linked to both severity of depression and impairments in psychomotor speed and cognition (26, 30, 42) and are consistent with the direction of cortical changes seen during acute sadness in experiment 1. The cortical increases accompanying remission generally replicate previous reports of antidepressant treatment effects (26, 44–46). In addition, resolution of mood symptoms in the present study was mirrored by significantly improved attentional performance. Simple reaction times were inversely correlated with right prefrontal cortex metabolism ( $r=-0.47$ ,  $N=$

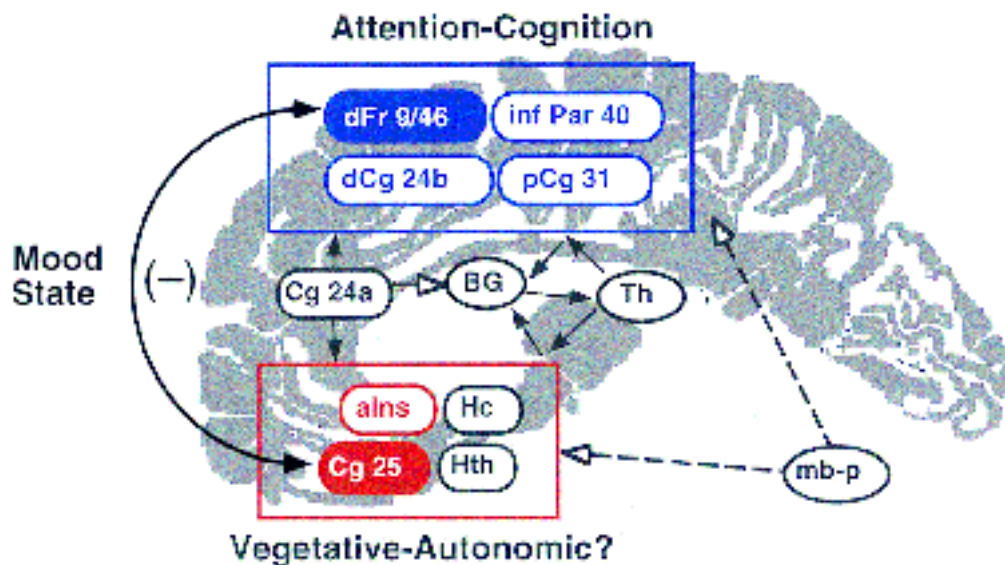
16,  $p=0.05$ ), consistent with the initial hypothesis that changes in mood and attention are behaviorally linked.

In contrast to the normalization of pretreatment abnormalities seen in cortical regions, the decrease in the ventral limbic region (subgenual cingulate) was not the normalization of an existing abnormality. Rather, this change was suppression of activity below the expected normal level (relative regional glucose metabolism: healthy subjects=1115, SD=100; pretreatment=1119, SD=89; posttreatment=940, SD=126). This decrease in subgenual activity has not been previously described with pharmacological treatment of depression but has been suggested by changes reported with ECT (47), although anatomical localization of changes with ECT are less precise than those reported here. This relative subgenual cingulate suppression is also consistent with resting state decreases seen in remitted depressed patients on maintenance antidepressant therapy (48). These pretreatment and remission-related findings—normal subgenual cingulate (Brodmann area 25) metabolism when depressed; subnormal metabolism when well—would appear to contradict a recent report of subgenual cingulate/medial prefrontal hypometabolism and atrophy in acutely depressed unipolar and bipolar patients (49). This apparent contradiction can be reconciled if the reported hypometabolism is corrected for the described regional atrophy, which would likely result in a metabolic pattern similar to those reported here (i.e., normal or slightly increased) (50).

A potential confounding factor in considering the interpretation of these data, despite the regional convergence across the two experiments, is the contribution of the neutral control conditions. It has been proposed that task-associated decreases can be caused by suspension of activity present during a passive task or resting state (51, 52). This does not appear to apply here, since in the transient mood-induction experiment, comparable decreases were seen during both a resting state and a neutral memory condition (i.e., one that more precisely matched the cognitive activity present during the sadness trial) (53). This theory also would not explain the cortical increases seen in experiment 2. While the debriefing interviews revealed no specific repetitive cognitive thoughts in any of the patients nor subjective differences between the two scans, one might have expected, on the basis of previous reports targeting random episodic thinking, increased uncontrollable intrusive thoughts in the acutely depressed state (scan 1), resulting in a decrease rather than an increase in prefrontal and parietal metabolism with remission of illness (52).

A second potential confounding element was the presence of tearfulness in six of the eight subjects in experiment 1. While there was inadequate power to assess these effects independently, inspection of single-subject subtractions revealed similar patterns of limbic increases and cortical decreases in subjects who did and did not become tearful. In addition, changes in these same areas were observed with the resolution of negative mood symptoms in the second experiment,

FIGURE 2. Schematic Model Illustrating Relationships Among Regions Mediating Shifts in Negative Mood State



<sup>a</sup> Regions with known anatomical connections that also show synchronized changes (with PET) with both provocation and resolution of negative mood are grouped into two compartments: dorsal (blue) and ventral (red). The dorsal-ventral segregation also defines the brain regions where an inverse relationship is seen across the two PET paradigms (table 1, figure 1). Curved black arrows and color-filled regions further emphasize the significant inverse correlation between right dorsal prefrontal cortex (dFr 9/46, in blue) and subgenual cingulate (Cg 25, in red) seen with both transient sadness in healthy volunteers (Fr decreases, Cg increases) and mood symptom resolution in depressed patients (Fr increases, Cg decreases). Noncolored regions delineate brain areas potentially critical to the schematic model but where changes were not identified in both experiments. Short black arrows indicate known anatomical pathways. Numbers are Brodmann area designations. Abbreviations: in blue: dFr=dorsolateral prefrontal; inf Par=inferior parietal; dCg=dorsal anterior cingulate; pCg=posterior cingulate; in red: Cg25=subgenual cingulate; aIns=anterior insula; in black: Cg 24a=rostral anterior cingulate; BG=basal ganglia; Th=thalamus; Hc=hippocampus; Hth=hypothalamus; mb-p=midbrain-pons.

even though tearfulness was not observed in any of the patients during either scan.

To recapitulate, concordant changes in nearly identical dorsal cortical and ventral limbic regions were demonstrated in both experiments (figure 1, top and bottom). The two areas demonstrating the greatest magnitude of change, subgenual cingulate (Brodmann area 25) and right prefrontal cortex (Brodmann area 9), were also strongly intercorrelated. Using regions of interest (216 mm<sup>3</sup>) centered on the maximal pixel identified in the two subtraction analyses, we found an inverse correlation between the activity in these two regions in both studies (sadness computed for all sadness and resting trials:  $r=-0.52$ ,  $N=30$ ,  $p=0.003$ ; remission computed at baseline, 1 week, and 6 weeks:  $r=-0.46$ ,  $N=24$ ,  $p=0.02$ ). These findings suggest that a reciprocal relationship between ventral limbic and dorsal cortical compartments is maintained through the interaction of these two nodes as mood shifts in either direction (figure 2). This statistical relationship further suggests that the negative influence of depressed mood on attention is probably attributable to functional connections between these two brain regions rather than concurrent changes in both sites independently.

The theory that these two regions are functionally linked and mutually inhibitory is supported by a large preclinical animal literature. Direct projections from subgenual cingulate to targets in dorsolateral prefrontal

cortex have been delineated, as have bidirectional indirect pathways through multiple limbic and paralimbic nodes, including posterior cingulate, hippocampus, and anterior insula (4, 9, 10, 54).

The reciprocal nature of the changes observed in these two experiments suggests that treatments for depression targeting either "old" or "new" brain areas in this local circuit should be equally effective—a hypothesis supported by empirical clinical experience and by the finding of comparable regional changes in both drug and placebo responders. Mood symptoms can be ameliorated with cognitive therapy, which implies a "top-down" cortical influence on limbic pathways (55). Pharmacological treatments are more classically viewed as acting "bottom-up" (or combined bottom-up and top-down), since brainstem nuclei—most notably locus ceruleus and dorsal raphe—are major sites of action of most antidepressants, with secondary effects mediated in remote cortical sites through afferent projections and postsynaptic receptor mechanisms (56, 57). A more pure bottom-up effect is implicated by the surgical destruction of the subgenual cingulate region and surrounding white matter (the so-called limbic leucotomy or subcaudate tractotomy) (58), used to treat the most severely treatment-resistant depressed patients, suggesting that the critical change mediating clinical improvement is limbic suppression with secondary cortical release or disinhibition. These clinical

observations might indicate that the requisite regional perturbation necessary for remission of disease is neither limbic nor cortical but a reconfiguration of their mutual interactions, whether initiated through top-down (cortical-limbic) or bottom-up (limbic-cortical) interventional strategies (42). If one assumes that these two approaches are equally viable, the related question of whether 1) suppression of ventral limbic regions allows normalization of dorsal cortical hypometabolism or 2) normalization of cortical activity causes a decrease in ventral limbic regions becomes moot. Clearly, this hypothesis requires examination of additional groups of patients of both genders as well as the focused evaluation of antidepressant medications that are not selective serotonin reuptake inhibitors. Further studies are also needed to delineate the specific behavioral correlates of the other identified regional changes, as well as to clarify how these results may be incorporated into other current theories of depression and mood regulation (5, 6, 59). Nonetheless, taken together, these data suggest that pathways connecting subgenual cingulate and dorsolateral prefrontal cortex are fundamental to the mediation of mood-attention interactions necessary for maintenance of emotional homeostasis in health and disease.

#### REFERENCES

1. James W: What is an emotion? *Mind* 1884; 9:188–205
2. Papez JW: A proposed mechanism of emotion. *Arch Neurol Psychiatry* 1927; 38:725–743
3. MacLean PD: Psychosomatic disease and the visceral brain: recent developments bearing on the Papez theory of emotion. *Psychosom Med* 1949; 11:338–353
4. Rolls ET: A theory of emotion, and its application to understanding the neural basis of emotion. *Cognition & Emotion* 1990; 4:161–190
5. Tucker DM, Luu P, Pribram KH: Social and emotional self-regulation. *Ann NY Acad Sci* 1995; 769:213–239
6. Damasio AR: The somatic marker hypothesis and the possible functions of the prefrontal cortex. *Philos Trans R Soc Lond B Biol Sci* 1996; 351:1413–1420
7. Weingartner H, Cohen RM, Murphy DL, Martello J, Gerdt C: Cognitive processes in depression. *Arch Gen Psychiatry* 1981; 38:42–47
8. Liotti M, Sava D, Rizzolatti G, Caffarra P: Differential hemispheric asymmetries in depression and anxiety: a reaction-time study. *Biol Psychiatry* 1991; 29:887–899
9. Carmichael ST, Price JL: Limbic connections of the orbital and medial prefrontal cortex in macaque monkeys. *J Comp Neurol* 1995; 363:615–641
10. Pandya DN, Yeterian EH: Comparison of prefrontal architecture and connections. *Philos Trans R Soc Lond B Biol Sci* 1996; 351:1423–1432
11. Dias R, Robbins TW, Roberts AC: Dissociation in prefrontal cortex of affective and attentional shifts. *Nature* 1996; 380:69–72
12. Baker SC, Frith CD, Dolan RJ: The interaction between mood and cognitive function studied with PET. *Psychol Med* 1997; 27:565–578
13. George MS, Ketter TA, Parekh PI, Rosinsky N, Ring HA, Pazzaglia PJ, Marangell LB, Callahan AM, Post RM: Blunted left cingulate activation in mood disorder subjects during a response interference task (the Stroop). *J Neuropsychiatry Clin Neurosci* 1997; 9:55–63
14. Pardo JV, Reiche ME, Fox PT: Localization of a human system for sustained attention by positron emission tomography. *Nature* 1991; 349:61–63
15. Corbetta M, Miezin FM, Shulman GL, Petersen SE: A PET study of visuospatial attention. *J Neurosci* 1993; 13:1202–1226
16. Pardo JV, Pardo PJ, Janer KW, Raichle ME: The anterior cingulate cortex mediates processing selection in the Stroop attentional conflict paradigm. *Proc Natl Acad Sci USA* 1990; 87:256–259
17. Morecraft RJ, Geula C, Mesulam MM: Architecture of connectivity within a cingulo-fronto-parietal neurocognitive network for directed attention. *Arch Neurol* 1993; 50:279–284
18. Mesulam MM: Large-scale neurocognitive networks and distributed processing for attention, language and memory. *Ann Neurol* 1990; 28:597–613
19. Pardo JV, Pardo PJ, Raichle ME: Neural correlates of self-induced dysphoria. *Am J Psychiatry* 1993; 150:713–719
20. George MS, Ketter TA, Parekh PI, Horwitz B, Herscovitch P, Post RM: Brain activity during transient sadness and happiness in healthy women. *Am J Psychiatry* 1995; 152:341–351
21. Schneider F, Gur RE, Mozley LH, Smith RJ, Mozley PD, Censits DM, Alavi A, Gur RC: Mood effects on limbic blood flow correlate with emotional self-rating: a PET study with O-15 labeled water. *Psychiatry Res* 1995; 61:265–283
22. Gemar MC, Kapur S, Segal ZV, Brown GM, Houle S: Effects of self-generated sad mood on regional cerebral activity: a PET study in normal subjects. *Depression* 1996; 4:81–88
23. Paradiso S, Robinson RG, Andreasen NC, Downhill JE, Davidson RJ, Kirchner PT, Watkins GL, Boles Ponto LL, Hichwa RD: Emotional activation of limbic circuitry in elderly normal subjects in a PET study. *Am J Psychiatry* 1997; 154:384–389
24. Lane RD, Reiman EM, Ahern GL, Schwartz GE, Davidson RJ: Neuroanatomical correlates of happiness, sadness, and disgust. *Am J Psychiatry* 1997; 154:926–933
25. Robinson RG, Kubos KL, Starr LB, Rao K, Price TR: Mood disorders in stroke patients: importance of location of lesion. *Brain* 1984; 107:81–93
26. Baxter LR Jr, Schwartz JM, Phelps ME, Mazziotta JC, Guze BH, Selin CE, Gerner RH, Sumida RM: Reduction of prefrontal cortex glucose metabolism common to three types of depression. *Arch Gen Psychiatry* 1989; 46:243–250
27. Mayberg HS: Frontal lobe dysfunction in secondary depression. *J Neuropsychiatry Clin Neurosci* 1994; 6:428–442
28. Bench CJ, Friston KJ, Brown RG, Scott LC, Frackowiak RS, Dolan RJ: The anatomy of melancholia—focal abnormalities of cerebral blood flow in major depression. *Psychol Med* 1992; 22:607–615
29. Mayberg HS, Brannan SK, Mahurin RK, Jerabek PA, Brickman JS, Tekell JL, Silva JA, McGinnis S, Glass TG, Martin CC, Fox PT: Cingulate function in depression: a potential predictor of treatment response. *Neuroreport* 1997; 8:1057–1061
30. Bench CJ, Friston KJ, Brown RG, Frackowiak RS, Dolan RJ: Regional cerebral blood flow in depression measured by positron emission tomography: the relationship with clinical dimensions. *Psychol Med* 1993; 23:579–590
31. First MB, Spitzer RL, Gibbon M, Williams JBW: Structured Clinical Interview for DSM-IV Axis I Disorders (SCID), Clinician Version: User's Guide. Washington, DC, American Psychiatric Press, 1996
32. Raichle ME, Martin WR, Herscovitch P, Mintun MA, Markham J: Brain blood flow measured with intravenous H<sub>2</sub>(15)O, II: implementation and validation. *J Nucl Med* 1983; 24:790–798
33. Phelps ME, Huang SC, Hoffman EH, Selin C, Sokoloff L, Kuhl DE: Tomographic measurement of local cerebral glucose metabolic rate in humans with (F-18)2-fluoro-2-deoxy-d-glucose: validation of method. *Ann Neurol* 1979; 6:371–388
34. Lancaster JL, Glass TH, Lankipalli BR, Downs H, Mayberg HS, Fox PT: A modality-independent approach to spatial normalization of tomographic images of the human brain. *Human Brain Mapping* 1995; 3:209–223

35. Talairach J, Tournoux P: Co-Planar Stereotaxic Atlas of the Human Brain. New York, Thieme Medical, 1988
36. D'Agostino RB, Belanger A, D'Agostino RB Jr: A suggestion for using powerful and informative tests of normality. *Am Statistician* 1990; 44:316–321
37. Fox PT, Mintun MA: Noninvasive functional brain mapping by change-distribution analysis of averaged PET images of H<sub>2</sub><sup>15</sup>O tissue activity. *J Nucl Med* 1989; 30:141–149
38. Worsley KJ, Evans AC, Marrett S, Neelin A: Three-dimensional statistical analysis for CBF activation studies in human brain. *J Cereb Blood Flow Metab* 1992; 12:900–918
39. Mintun MA, Fox PT, Raichle ME: A highly accurate method of localizing regions of neuronal activation in the human brain with positron emission tomography. *J Cereb Blood Flow Metab* 1989; 9:96–103
40. Lancaster JL, Rainey LH, Summerlin JL, Freitas CS, Fox PT, Evans AC, Toga AW, Mazziotta JC: Automated labeling of the human brain: a preliminary report on the development and evaluation of a forward-transform method. *Human Brain Mapping* 1997; 5:238–242
41. Fox PT, Ingham RJ, Ingham JC, Hirsch TB, Downs JH, Martin C, Jerabek P, Glass T, Lancaster JL: A PET study of the neural systems of stuttering. *Nature* 1996; 382:158–161
42. Mayberg HS: Limbic-cortical dysregulation: a proposed model of depression. *J Neuropsychiatry Clin Neurosci* 1997; 9:471–481
43. Liotti M, Mayberg HS, Ryder K, Brannan SK, Woldorff MG: An ERP study of mood provocation in remitted depression. *Abstracts of the Society for Neuroscience* 1996; 23:1657
44. Martinot J-L, Hardy P, Feline A, Huret J-D, Mazoyer B, Attar-Levy D, Pappata S, Syrota A: Left prefrontal glucose hypometabolism in the depressed state: a confirmation. *Am J Psychiatry* 1990; 147:1313–1317
45. Bench CJ, Frackowiak RSJ, Dolan RJ: Changes in regional cerebral blood flow on recovery from depression. *Psychol Med* 1995; 25:247–251
46. Buchsbaum MS, Wu J, Siegel BV, Hackett E, Trenary M, Abel L, Reynolds C: Effect of sertraline on regional metabolic rate in patients with affective disorder. *Biol Psychiatry* 1997; 41:15–22
47. Nobler MS, Sackeim HA, Prohovnik I, Moeller JR, Mukherjee S, Schnur DB, Prudic J, Devanand DP: Regional cerebral blood flow in mood disorders, III: treatment and clinical response. *Arch Gen Psychiatry* 1994; 51:884–897
48. Liotti M, Mayberg HS, Brannan SK, McGinnis S, Jerabek PA, Martin CC, Fox PT: Mood challenge in remitted depression: a <sup>15</sup>O-water PET study. *NeuroImage* 1997; 5:S114
49. Drevets WC, Price JL, Simpson JR Jr, Todd RD, Reich T, Vannier M, Raichle ME: Subgenual prefrontal cortex abnormalities in mood disorders. *Nature* 1997; 386:824–827
50. Meltzer CC, Zubieta JK, Brandt J, Tune LE, Mayberg HS, Frost JJ: Regional hypometabolism in Alzheimer's disease as measured by positron emission tomography after correction for effects of partial volume averaging. *Neurology* 1996; 47:454–461
51. Shulman GL, Fiez JA, Corbetta M, Buckner RL, Miezin FM, Raichle ME, Petersen SE: Common blood flow changes across visual tasks, II: decreases in cerebral cortex. *J Cognitive Neuroscience* 1997; 9:647–662
52. Andreasen NC, O'Leary DS, Cizadlo T, Arndt S, Rezaei K, Watkins GL, Boles Ponto LL, Hichwa RD: Remembering the past: two facets of episodic memory explored with positron emission tomography. *Am J Psychiatry* 1995; 152:1576–1585
53. Mayberg HS, Liotti M, Jerabek PA, Martin CC, Fox PT: Induced sadness: a PET model of depression. *Human Brain Mapping* 1995; 1(suppl):396
54. Vogt BA, Pandya DN: Cingulate cortex of the rhesus monkey, II: cortical afferents. *J Comp Neurol* 1987; 262:271–289
55. Beck AT, Rush JA, Shaw BS, Emery G: *Cognitive Therapy of Depression*. New York, Guilford Press, 1979
56. Chaput Y, deMontigny C, Blier P: Presynaptic and postsynaptic modifications of the serotonin system by long-term administration of antidepressant treatments: an in vitro electrophysiologic study in the rat. *Neuropsychopharmacology* 1991; 5:219–229
57. Hyman SE, Nestler EJ: Initiation and adaptation: a paradigm for understanding psychotropic drug action. *Am J Psychiatry* 1996; 153:151–162
58. Cosgrove GR, Rausch SL: Psychosurgery. *Neurosurg Clin North Am* 1995; 6:167–176
59. Henriques JB, Glowacki JM, Davidson RJ: Reward fails to alter response bias in depression. *J Abnorm Psychol* 1994; 103:460–466